

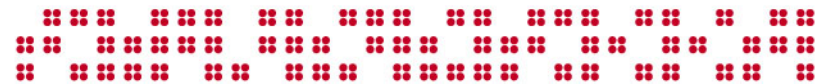
SuperArray Bioscience Corporation

A short presentation on company history,
product/services, technology and business model

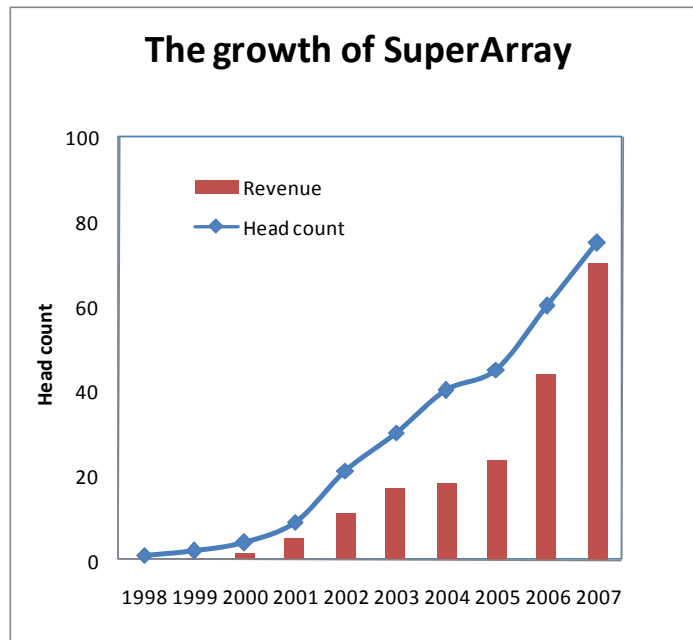
Sean X. Yu, Ph.D

7320 Executive Way

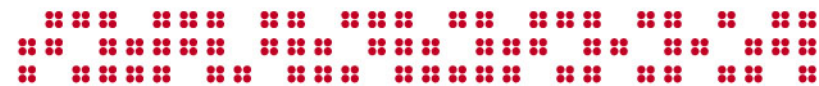
Frederick, Maryland 21704



SuperArray Bioscience Corporation --- A Brief History

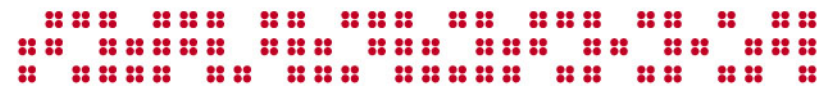
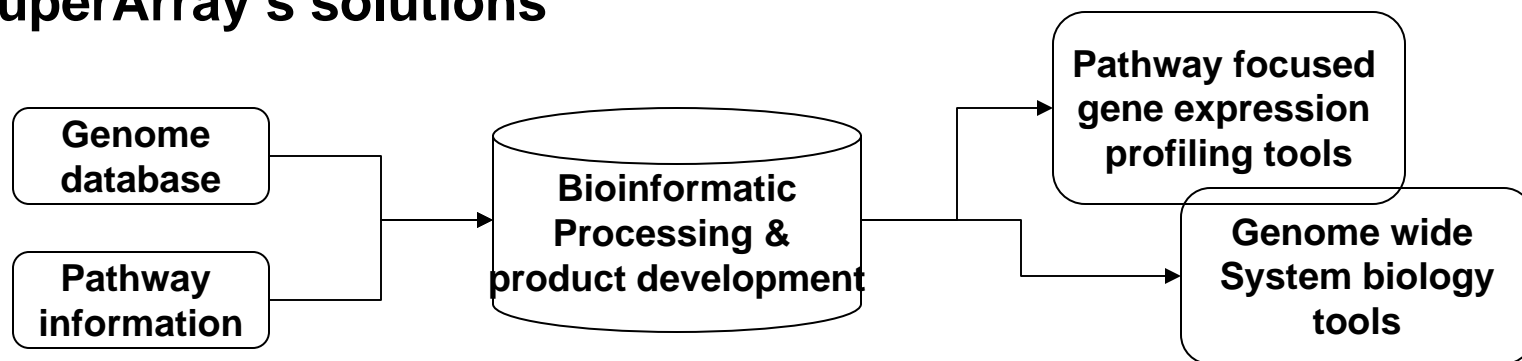


- A privately held biotech Co;
- Founded in 1998
- 65 employees, headquartered in Frederick, MD
- Develop and sell tools for biomedical research and pharmaceutical development;
- The leader in many product areas such as pathway focused gene expression profiling, real time PCR;
- Established customer base in both academic institutions, biotech and pharmaceutical industries, ship to over 20 international distributors worldwide



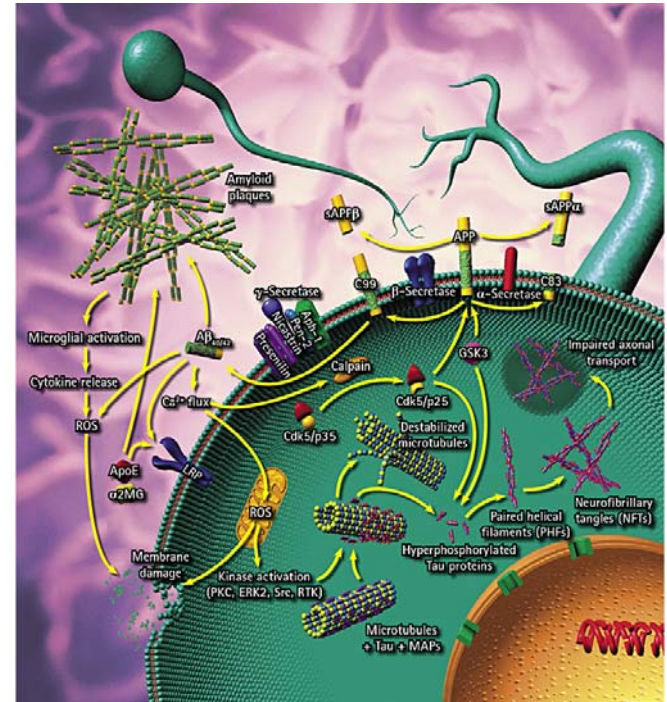
Business model

- **Post genome knowledge base:** vast sequencing knowledge accumulated from high throughput sequencing projects
- **Emerging and fast growing market**
 - Need for assays to study multiple target simultaneously
 - High density microarray for RNA, SNP and protein profiling (e.g. Affymetrix GeneChip)
- **Unmet need:** Microarrays for every laboratory
- **SuperArray's solutions**

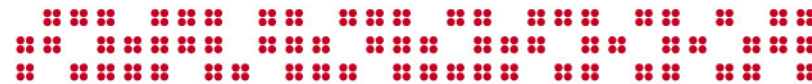


Technology, Product and services Pathway focused gene expression profiling microarrays

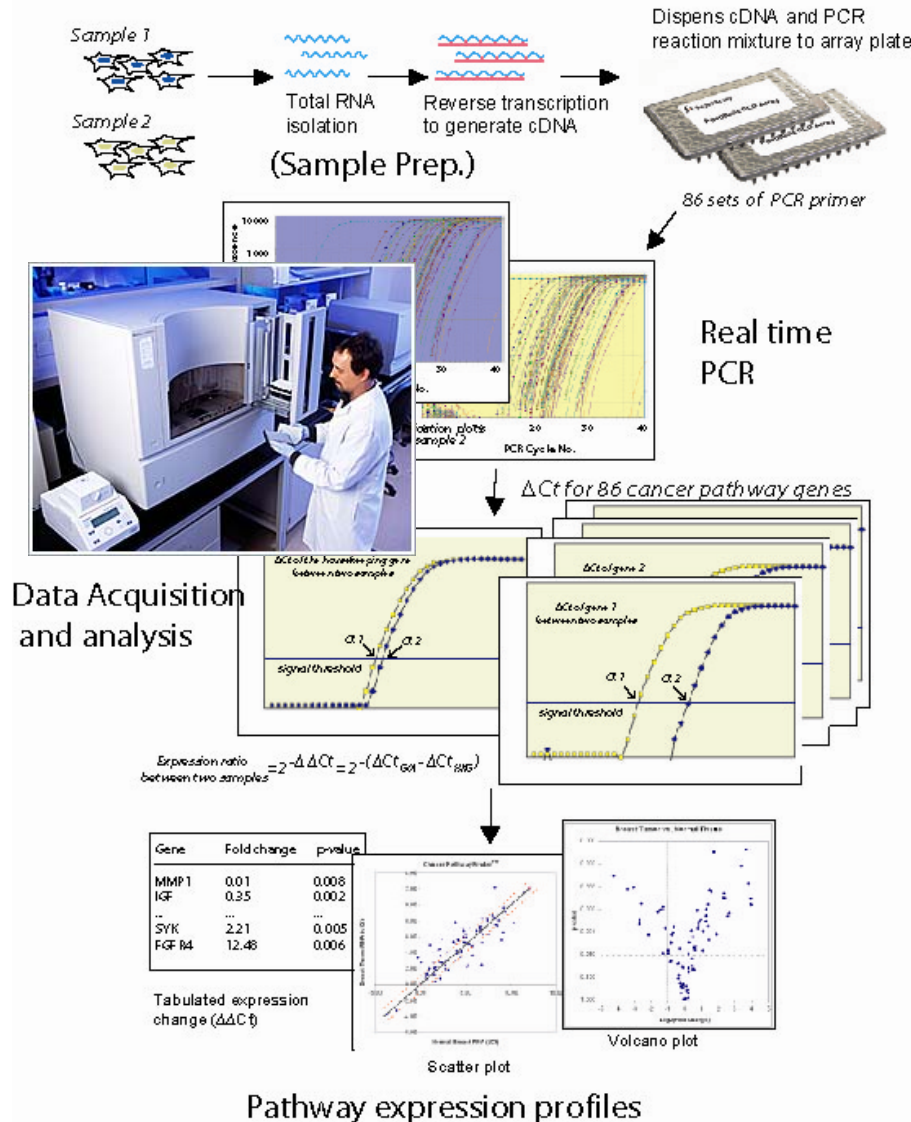
- **Why focused microarray**
 - Focused, information rich pathway content
 - Cost effective
 - Easy to implement
 - Easy to use
- **Evolution of pathway focused microarrays**



| Year | 1999 | 2001 | 2004 | 2005 |
|------------|------------------------------------------|------------------------------------------|-------------------------------------------|---------------------------|
| Product | Original GEMarray | Q series GEMarray | Oligo GEMarray | RT2 Proiler PCR Array |
| Technology | cDNA on nylon, hybridization based assay | cDNA on nylon, hybridization based assay | Oligo on nylon, hybridization based assay | Real time PCR based assay |

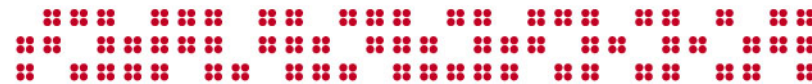


Pathway Gene Expression Profiling using PCR Array



RT2 Profiler PCR Array

- Based on robust SYBR green realtime PCR technology
- Profile 86 pathway related gene in one experiment
- 100s pathway focused PCR arrays covering major research and development applications (e.g. cancer, immunology, drug development...)



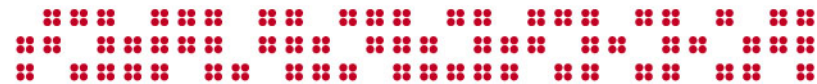
Technology, Product and services

System biology tools

Take advantage of genome sequence database information

Developed with advanced bioinformatic tools and vigorous testing

- **Genome wide RT2 real time PCR assays**
 - Optimized and individually QC tested SYBR green realtime PCR assay for any gene in human, mouse or rat genome (more than 60,000 assay available)
- **Genome wide shRNA tools**
 - Plasmid based shRNA kit for any gene in human, mouse or rat genome (more than 60,000 assays available)



Going forward:

Our goal is to become a leader in providing system biology tools

We will continue to develop new tools in genomic, proteomic and epigenomic areas

