



Innovative Biosensors, Inc.

Joe Hernandez

President and CEO

June 2007

The new symbol for
unmatched speed
and sensitivity in
pathogen detection.

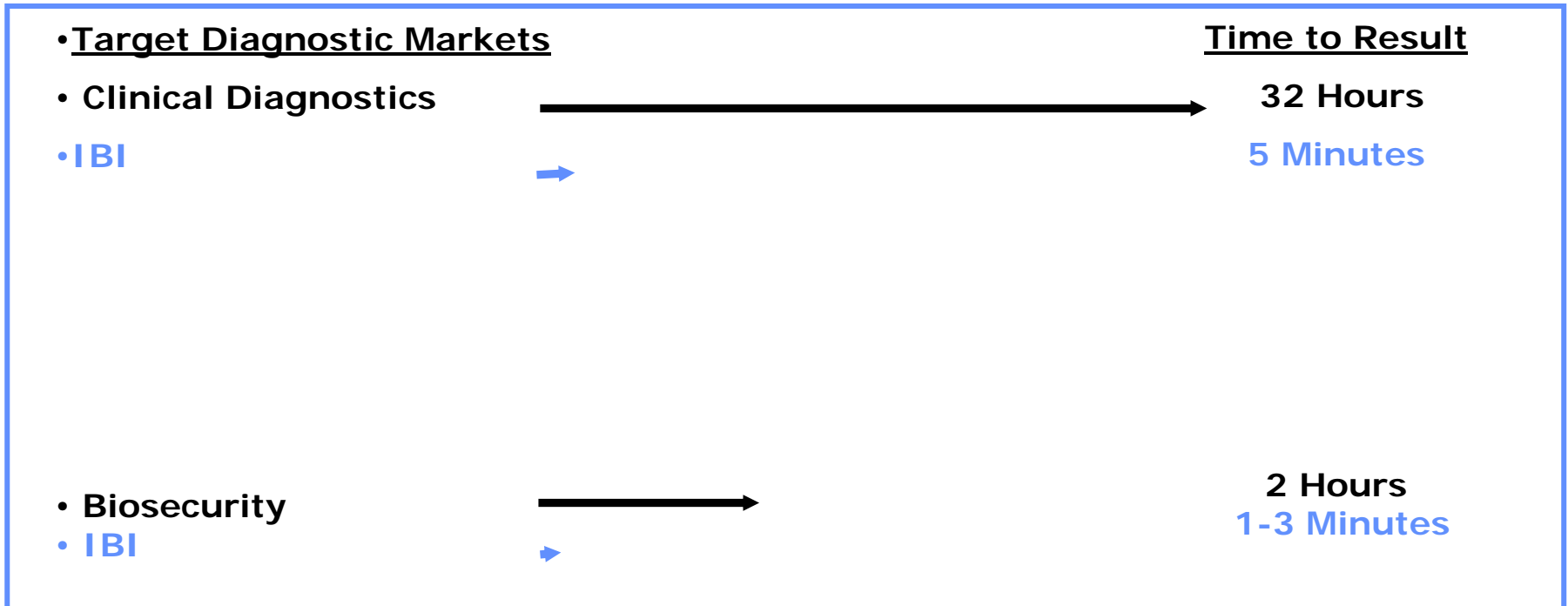


Summary

- Developer of rapid pathogen detection systems
- Validated platform technology with multiple applications
- Addressing global markets of >\$3.5 billion
- Commercializing initial products
- Experienced management team
- Closed \$6.25MM Series A/A-1 financing with:
 - CNF Investments LLC
 - Chart Venture Partners
 - Harbert Venture Partners
 - New Markets Growth Fund
 - The Maryland Venture Fund



The Problem



- Existing approaches are labor intensive, time consuming and with low sensitivity
- Slow results have significant impact on decision making chain



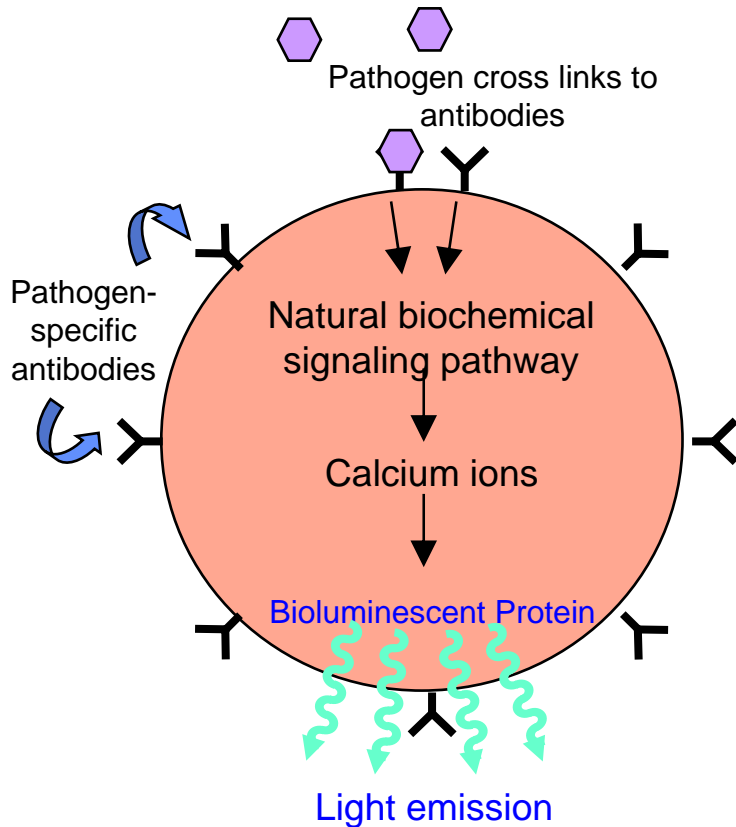
The Solution: CANARY™

- Cellular Analysis and Notification of Antigen Risks and Yields
- Detects bacteria, viruses, proteins, and nucleic acids
- Offers excellent combination of speed and sensitivity
- Quiescent Cell Based Biosensor
 - Antibody raised
 - Rapid
 - Extremely sensitive
 - Luminescent output
 - Inexpensive to commercialize
- Developed at MIT's Lincoln Lab
 - \$26M in DARPA, DOD and other funding
 - Ongoing since 1998
 - Large scientific team currently on project
- Published in Science
 - Vol. 301 11 July 2003 pg. 213-215





CANARY Biosensor



B lymphocyte
(white blood cell)

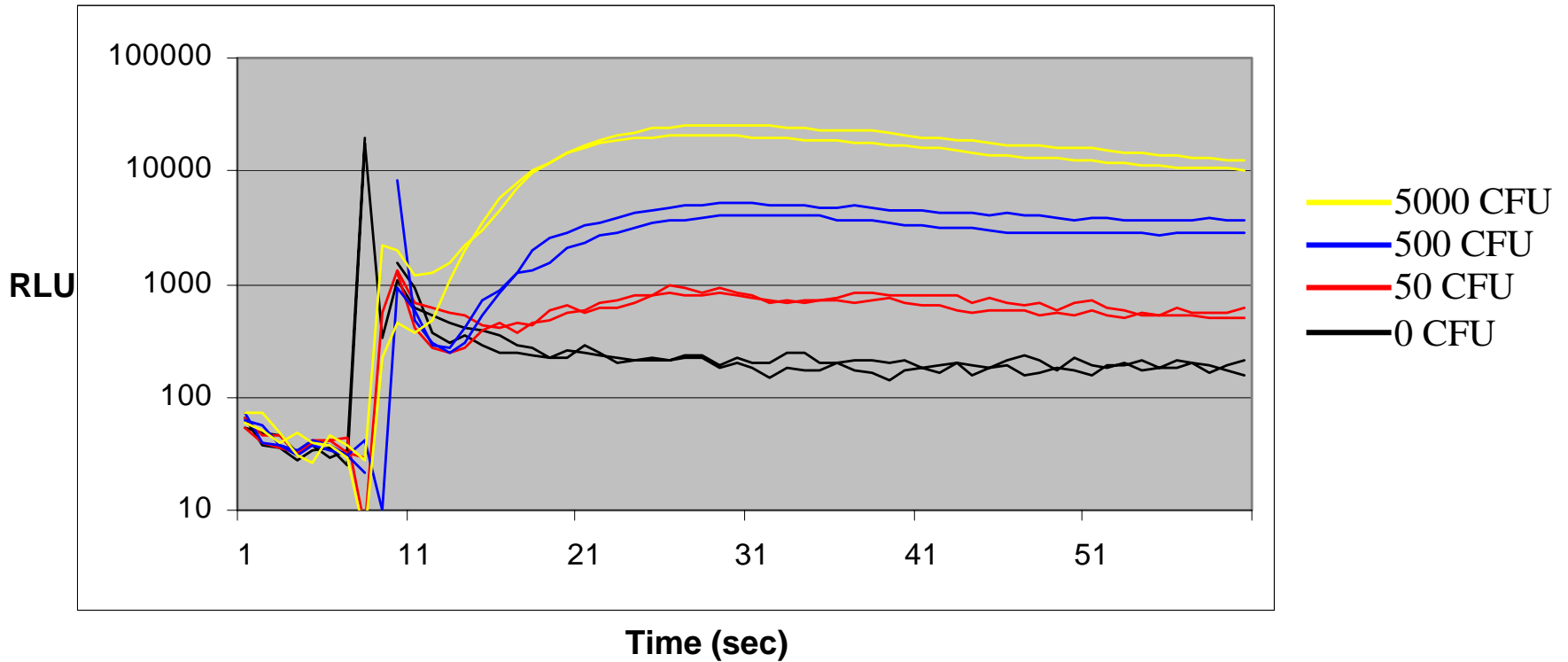
Advantages

- Speed and Sensitivity
 - Results in seconds
 - Ultra-sensitive detection
- Specificity
 - Defined by antibody selectivity
 - Can be broad or focused
 - Multiple pathogen detection
- Ease of use
 - Simple protocol
 - Small and portable instrument





The Solution: Detection of Chlamydia



CFU: Colony Forming Units (number of bacteria)
RLU: Relative Light Units





Current Products



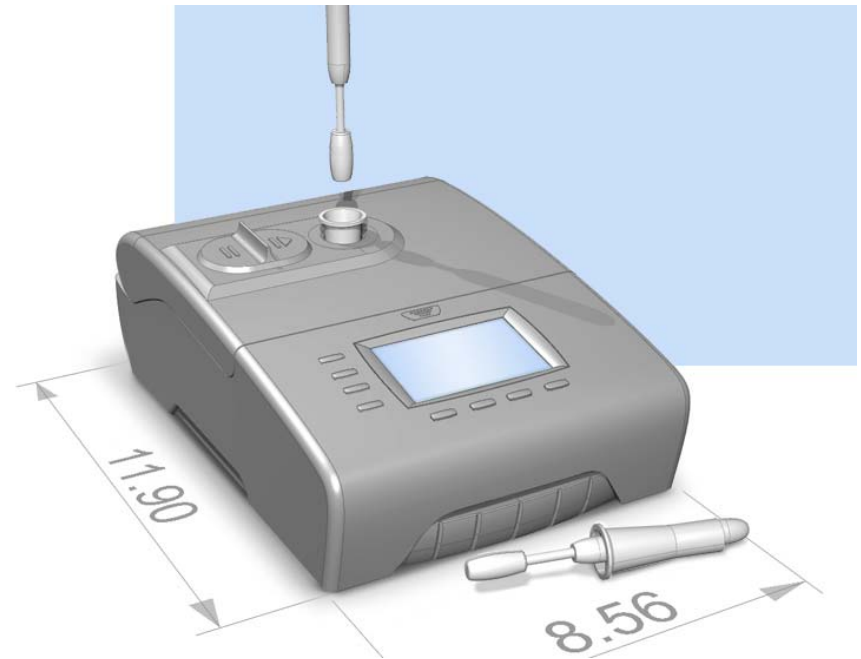
Instrumentation



Consumables



2nd Generation Clinical Instrument Prototype





New Aerosol Instrument



HEPA filter

Off the shelf plastic enclosure
houses controls – viewing angle
could pivot

Internally illuminated disc hopper
shows user discs through window

Aluminum extrusion corner
details & black anodized
aluminum wall panels



Management Team

Joe Hernandez, President and CEO

- Led the establishment of IBI by:
 - Negotiating an exclusive license from MIT
 - Establishing key corporate relationships, developing the business strategy and business plan.
- Senior marketing and business development positions at Merck, Affymetrix, and Digene

Joanne Stephenson, Head of Strategic Marketing

- Senior sales, marketing, and business development positions at Response Biomedical

Rick Thomas, VP of Business Development

- Former President of Smith's Detection
- Senior business development and marketing positions at Sceptor Industries

Ted Olsen, VP of Operations

- Senior operations positions at Corning and Corvis

Tom Hazel, Ph.D., VP of Research

- Senior research positions at Neuralstem and NIH

Kevin Madorress, Ph.D., Director of Assay Development

- Senior research positions at Digene and NIH

Rigg Mohler, CPA, Chief Financial Officer

- Senior financial and accounting positions at Advancis Pharmaceuticals, Sequoia Pharmaceuticals and PricewaterhouseCoopers



Board of Directors

- Joe Hernandez, President and CEO
- Will Brooke, Managing Partner, Harbert Venture Partners
- Joe Del Guercio, Principal, CNF Investments LLC
- Cole Van Nice, Partner, Chart Venture Partner
- Marc Grovic, Managing Partner, New Markets Growth Fund
- Phil Samper, Managing General Partner and Co-Founder Gabriel Ventures, Vice-Chairman and Executive Officer at Eastman Kodak and Chief Executive of Sun Microsystems
- Robin Toft, Senior Vice-President, Roche Diagnostics, Vice-President of ViroLogic, Inc., Associate Vice-President of Labcorp



Scientific Advisory Board

Dr. Arnie Weinberg

- Professor of Medicine, Harvard Medical School, Medical Director at MIT, Member, Board of Directors, Whitehead Institute for Biomedical Research

Dr. Eddie Richter

- Food Safety Professor, The Ohio State University and Founder of Silliker Labs and Richter International, an affiliate of Battelle

Dr. David Gelfand

- One of the pioneers of PCR. Vice President at Roche Molecular Systems, Inc and Cetus Corporation

Dr. David Solomon

- Medical Director, Carrot Capital and Chief Scientific Officer to biotechnology companies, including Cure Therapeutics, Access Scientific Inc., Critical Diagnostics, and Remedy Pharmaceuticals

Dr. Jim Snyder

- Professor of Pathology for Clinical Services, University of Louisville School of Medicine and Clinical Instructor at the Department of Medical Technology. Well know figure in the areas of infectious disease and clinical testing.

Dr. Raymond Mackay

- Ex-Director of Research and Technology Directorate at the U.S. Army Edgewood Chemical Biological Center, Aberdeen Proving Grounds. Ex-Chief of Detection Technology Division, Chemical Research, Development, and Engineering Center





Summary

- Large market opportunity
- Multiple market opportunities
- Superior technology
- Multiple revenue streams
- Experienced management team
- Near term revenues and profit





Contact Information

Joe Hernandez

President and Chief Executive Officer

INNOVATIVE BIOSENSORS, INC.(IBI)

15601 Crabbs Branch Way

Rockville, MD 20855

Tel: 301-517-0324

Fax: 301-738-0605

www.innovativebiosensors.com

